






27 Morton Street Waterford QLD

4  2  2 

This split level family home is ripe and waiting for its new Owners to make it their Own! Situated at the top of the Woodlands Estate, this one is perfect for those looking to enjoy the views and the quiet! For the investor, it was previously returning \$420pw!

Price : \$ 398,000
Land Size : 656 sqm
View : <https://www.kingcompanypg.com/sale/qld/lo-gan/waterford/residential/house/6760632>

Property Features:

- *Open plan kitchen, living and dining area with huge island bench and breakfast bar
- *Air-conditioning to living space with access out to patio area
- *Separate large lounge/ media room
- *Master bedroom with built-ins, air-conditioning and ensuite
- *Three other bedrooms all with built-ins and ceiling fans
- *Main bathroom on lower level with separate toilet
- *Double lock up remote garage



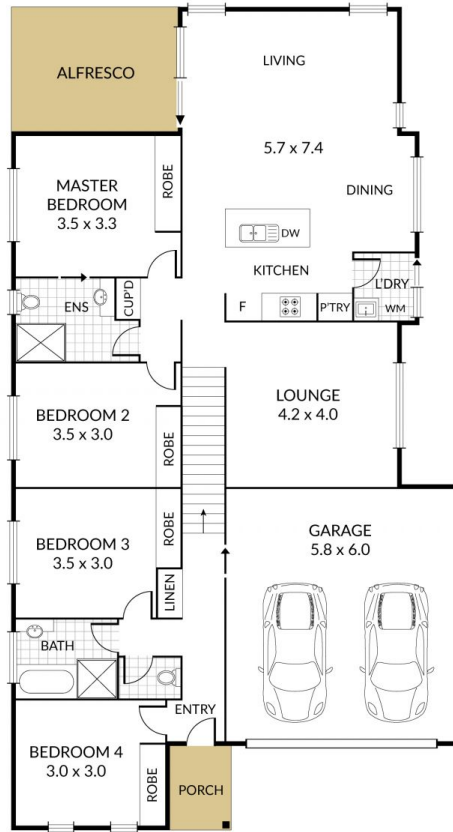
Courtney King
07 3805 2755

Internal 173m² External 15m² Total 188m²

27 Morton Street, **Waterford**



4 x 2 x 2 x



NOTE: Every precaution has been taken to verify the accuracy of the above details. However, prospective purchasers are advised to make their own enquiries.