



19 Nova Street Waterford QLD

4  2  2 

This large four bedroom home needs to be on your must see list!

Property Features:

- ~ Lovely big entry way to open plan kitchen, dining & living space with air-conditioning & ceiling fans
- ~ Separate lounge/ media room
- ~ Kitchen with breakfast bar, dishwasher & stainless steel appliances
- ~ Four well sized bedrooms all to the rear of the home (with built-ins & ceiling fans)
- ~ Master bedroom with large WIR & Ensuite
- ~ Main bathroom with bath + separate toilet
- ~ Great alfresco area + yard space

Additional Features:

- ~478sqm block (slightly sloped to rear)

Price : \$ 387,000

Land Size : 478 sqm

View : <https://www.kingcompanypg.com/sale/qld/lo-gan/waterford/residential/house/6760637>



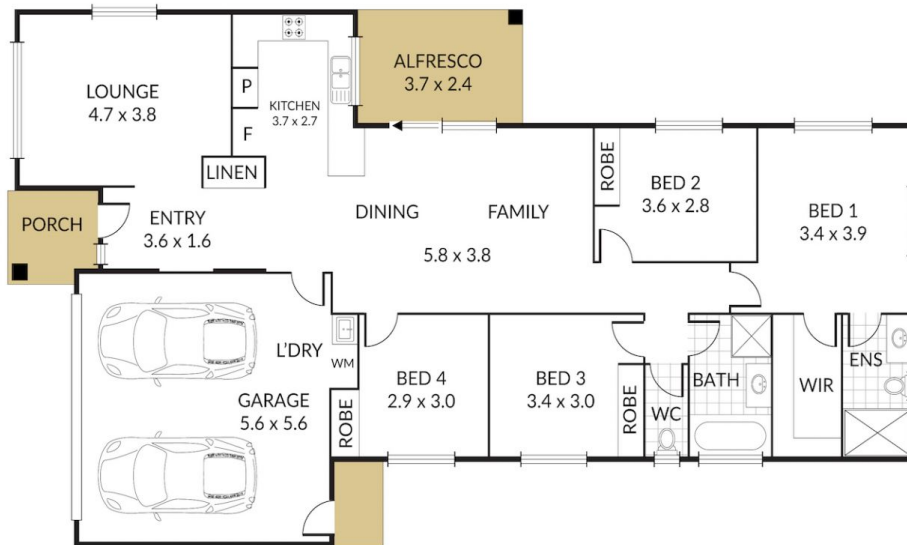
Courtney King
07 3805 2755

Internal 180m² External 16m² Total 196m²

19 Nova Street, **Waterford**



4 x 2 x 2 x



KING&COMPANY
PROPERTY GROUP

NOTE: Every precaution has been taken to verify the accuracy of the above details. However, prospective purchasers are advised to make their own enquiries.