



4 Carnarvon Crescent Waterford QLD

4 2 2

You will fall in love with this oversized family home from the moment you walk in through the opulent entry way!

Property Hallmarks:

- ~ Large master bedroom situated to the front of the property, with air-conditioning, walk-in-robe and gorgeous en-suite with double vanity
- ~ Enormous open plan kitchen, living & dining area with air-conditioning
- ~ Central kitchen with gas cooking & breakfast bar
- ~ Additional carpeted media room/ formal lounge room
- ~ Separated by a small staircase, up from the living space is 3 additional bedrooms, all with built-in robes
- ~ You will also find a well appointed main bathroom with shower & bath
- ~ A second vanity, which services the separate toilet
- ~ Storage, Storage & more Storage cupboards!



Price : \$ 462,500
Land Size : 697 sqm
View : <https://www.kingcompanypg.com/sale/qld/lo-gan/waterford/residential/house/6760641>

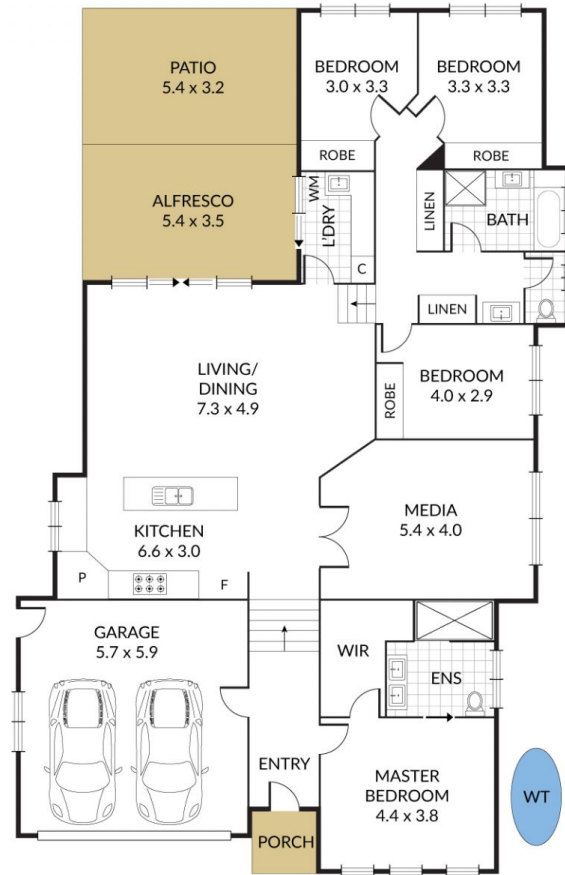


Courtney King
07 3805 2755

Internal 224m² External 42m² Total 266m²

4 Carnarvon Crescent, **Waterford** 
NORTH

4 x  2 x  2 x 



KING & COMPANY
PROPERTY GROUP

NOTE: Every precaution has been taken to verify the accuracy of the above details. However, prospective purchasers are advised to make their own enquiries.