



7 Tooloom Court Waterford QLD

3 2 2

Situated in a quiet position, near the end of a cul-de-sac overlooking parkland and on an oversized block - this one is a must inspect!

Property Features:

- ~ Open plan kitchen, dining & living are with air-conditioning
- ~ Great kitchen with bench space + stainless steel appliances & dishwasher
- ~ Master bedroom with ensuite + walk-in-robe + sliding door out to patio area, perfect for the morning coffee
- ~ Two other well sized bedrooms
- ~ Main bathroom with bathtub + separate toilet
- ~ Laundry with side access to carport
- ~ Large patio, stretching across entire length of home

Other Features:

Price : \$ 335,000
Land Size : 314 sqm
View : <https://www.kingcompanypg.com/sale/qld/lo-gan/waterford/residential/house/6760644>



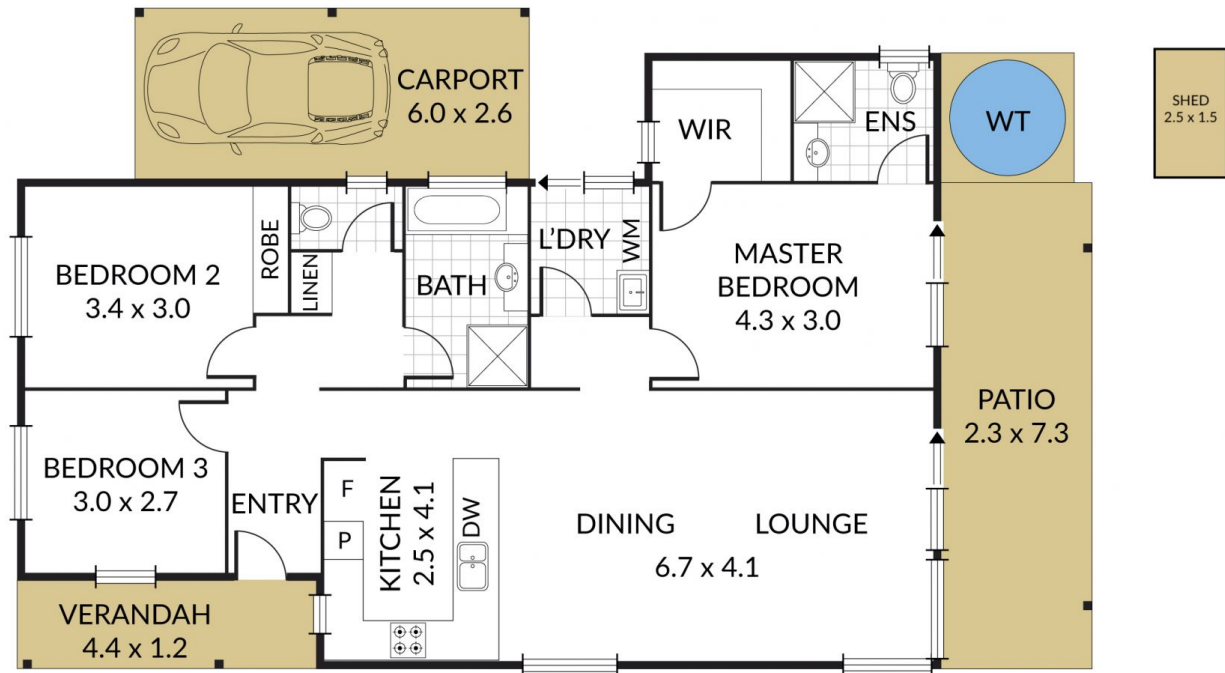
Courtney King
07 3805 2755

Internal 111m² External 39m² Total 150m²

7 Tooloom Court, **Waterford**



3 x 2 x 1 x



KING & COMPANY
PROPERTY GROUP

NOTE: Every precaution has been taken to verify the accuracy of the above details. However, prospective purchasers are advised to make their own enquiries.