

20 Wongabel Close Waterford QLD

4 🛏️ 2 🚿 2 🚗

Situated in a cul-de-sac street & offering great value for money, this home is sure to impress.

Property Features:

- ~Open plan kitchen, living & dining space, air-conditioned
- ~Oversized kitchen, with dishwasher & gas cooking + island bench
- ~Four double bedrooms, all with built-ins & ceiling fans
- ~Huge master bedroom, with walk-in robe and ensuite
- ~Family bathroom with shower & bath + separate toilet
- ~Alfresco area with low maintenance backyard

Currently tenanted at \$395pw (periodic lease).

Your inspection is welcomed at any advertised open home time.

Price : \$ 388,000

View : <https://www.kingcompanypg.com/sale/qld/logan/waterford/residential/house/6760647>



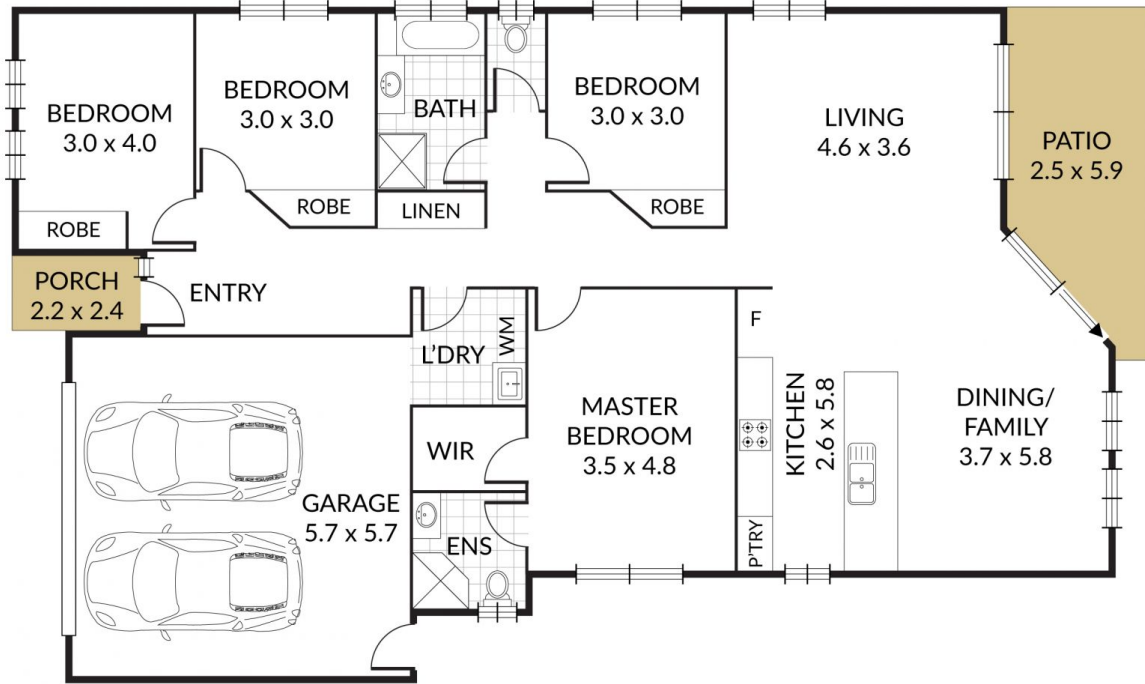
Courtney King
07 3805 2755

Internal 177m² External 16m² Total 193m²

20 Wongabel Close, **Waterford**



4 x 2 x 2 x



KING & COMPANY
PROPERTY GROUP

NOTE: Every precaution has been taken to verify the accuracy of the above details. However, prospective purchasers are advised to make their own enquiries.