



1 Mirima Court Waterford QLD

4 2 2

A fantastic family home situated at the top of the Woodlands Estate with great views from the both the front & the back of the property!

Property Features:

- ~ Open plan living & dining space with air-conditioning
- ~ Great family kitchen with dishwasher, double pantry & island bench
- ~ Separate lounge/media room
- ~ Four well sized bedrooms, all with built-in robes & ceiling fans
- ~ Master bedroom with ensuite & walk-in-robe
- ~ Main bathroom with shower & bath + separate toilet
- ~ Remote, double lock up garage

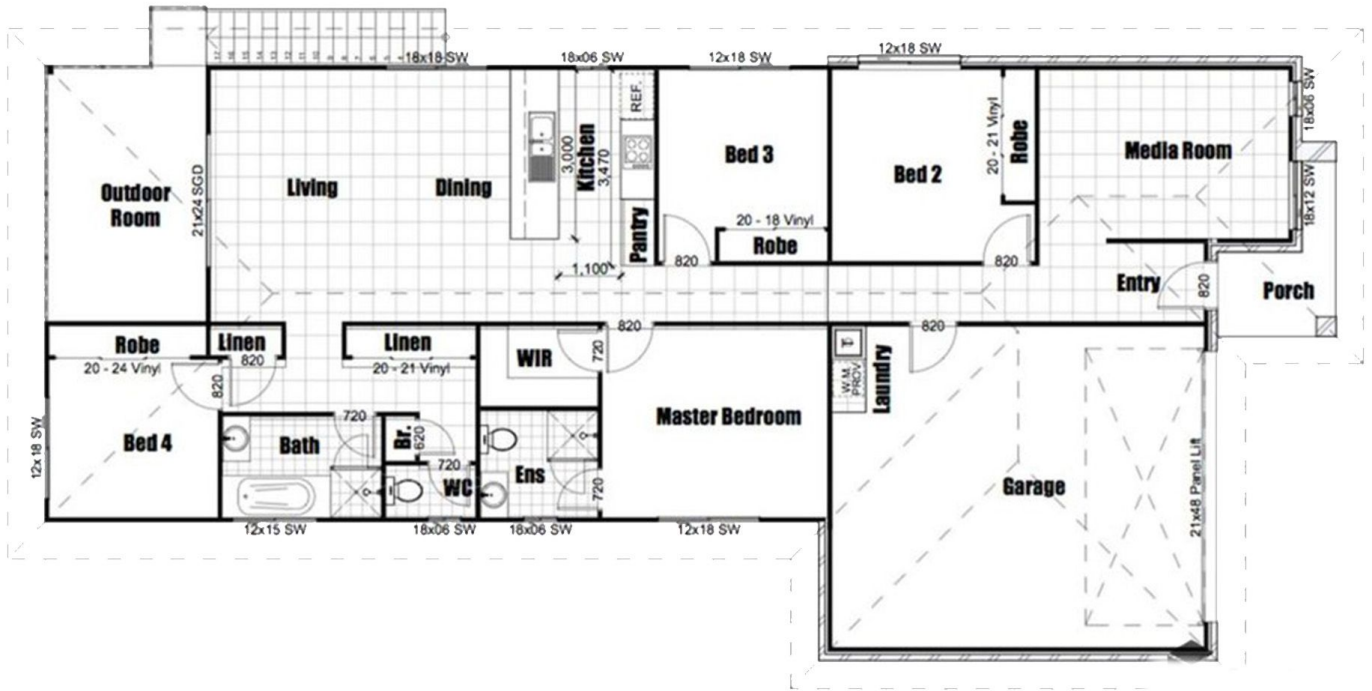
Additional Features:

- ~ Large usable block (581sqm), fully fenced & with side

Price : \$ 421,000
Land Size : 581 sqm
View : <https://www.kingcompanypg.com/sale/qld/lo-gan/waterford/residential/house/6760648>



Courtney King
07 3805 2755



KING & COMPANY
PROPERTY GROUP