

28 Carnarvon Crescent Waterford QLD

4 2 4

Comprising of multiple living spaces and spread over three levels, this spacious home has a very well thought-out floor plan. The main level of this home is all about functionality, with four separate areas available, including open plan kitchen, living & dining space, study area, separate media room + additional rumpus/ games room! The layout lends itself well to the growing family with entertaining at the forefront of the design. The kitchen is well equipped, with gas cook top, dishwasher, walk-in pantry, ample cupboards & draws + oversized island bench with breakfast bar. Moving across to the large open planned living & dining space, which opens out to the alfresco area to the rear and has views out to the City from the front!

Building on from the open plan living space, there is also the enormous, air-conditioned rumpus/ games room, with stacker doors out to the pool area. Separated away from

Price : \$ 725,000
Building Size : 368 sqm
Land Size : 1001 sqm
View : <https://www.kingcompanypg.com/sale/ql d/logan/waterford/residential/house/676 0659>



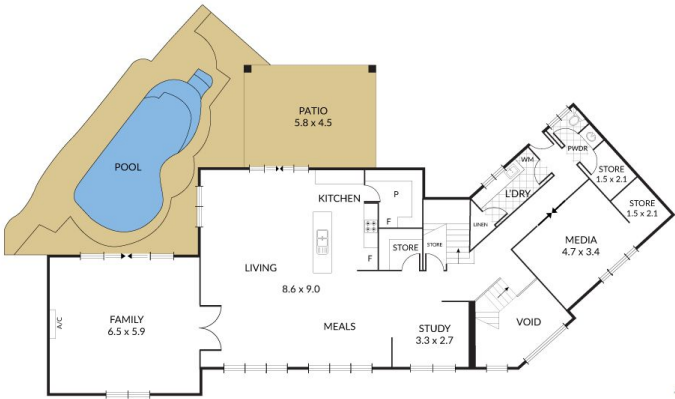
Courtney King
07 3805 2755

Internal 368m² External 632m² Total 1000m²

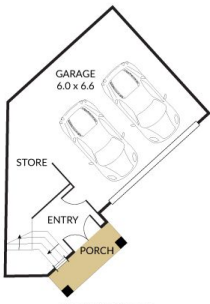
28 Carnarvon Crescent, **Waterford**



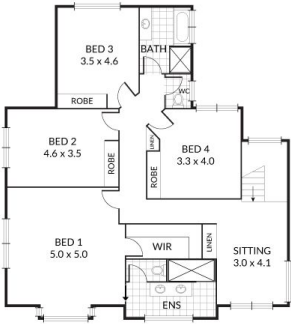
4 x 2 x 2 x



FIRST FLOOR



GROUND FLOOR



SECOND FLOOR

SHED
3.0 x 3.0

KING & COMPANY
PROPERTY GROUP

NOTE: Every precaution has been taken to verify the accuracy of the above details. However, prospective purchasers are advised to make their own enquiries.