



37 Adelaide Crescent Ormeau Hills QLD

4 2 2

Situated atop the Ormeau Hills estate and a short stroll to great parklands for the kids, this home is full of character and MUST be on your inspection list this weekend!

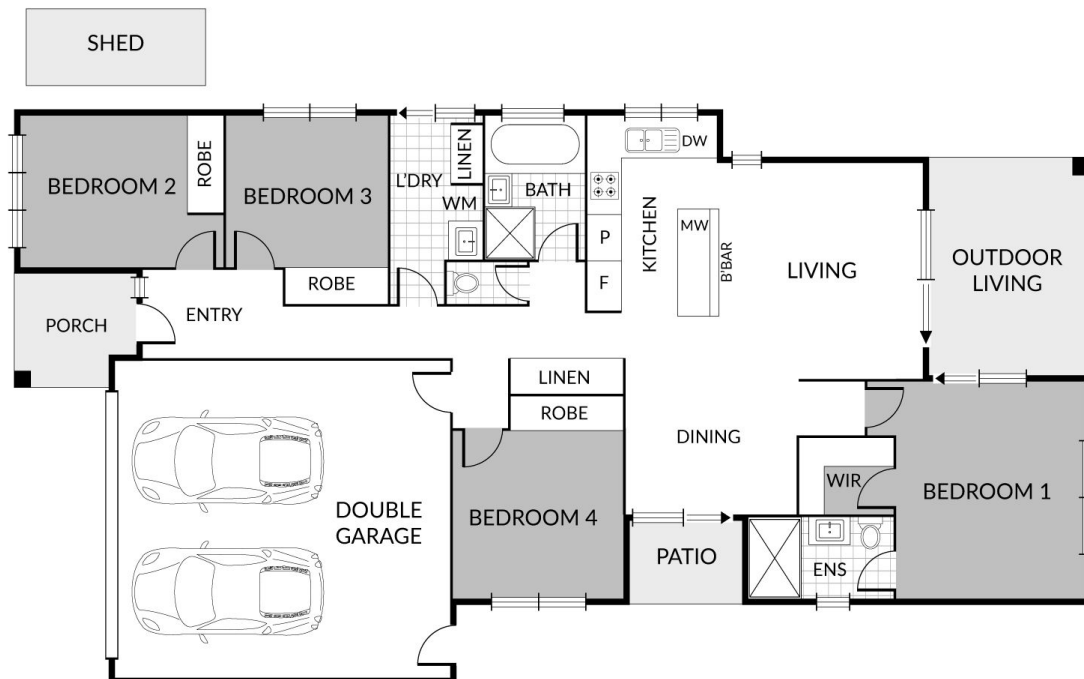
Property Hallmarks:

- Open plan dining & living space with air-conditioning
- Kitchen with island bench, dishwasher & quality appliances
- Well sized bedrooms with ceiling fans + built-in robes
- Main bathroom with oversized tub + separate toilet
- Separate master bedroom with air-conditioning, ensuite & walk-in-robe + sliding door access to alfresco
- A fantastic, low maintenance back yard space (fully fenced & with side access)
- Alfresco area overlooking yard
- Second alfresco area off dining room
- Double lock up garage with internal access

Price : \$ 542,500
Land Size : 465 sqm
View : <https://www.kingcompanypg.com/sale/qld/lo-gan/ormeau-hills/residential/house/6760663>



Courtney King
07 3805 2755



37 Adelaide Crescent, Ormeau Hills

Internal: 165m² 4 x
 External: 20m² 2 x
 Total: 185m² 2 x

KING & COMPANY
 Property Group

Note: Every precaution has been taken to verify the accuracy of the above details. However, prospective purchasers are advised to make their own enquiries.