



6 Eurimbula Close Waterford QLD

4 2 2

This split-level home is situated in a quiet pocket of the Woodlands Estate with an abundance of natural light and that warm feeling of home!

Property Hallmarks:

- ~ An open plan living space perfect for entertaining, with gorgeous raked ceilings, air-conditioning and ceiling fan
- ~ A fresh, modern kitchen with island bench featuring soft close draws & stone benchtops, 900mm Smeg Electric Oven + Gas Cook top + Fisher & Paykel dishwasher
- ~ Separate formal lounge room
- ~ Four well sized bedrooms, all with built-in robes, ceiling fans & split system air-conditioning units (beds 2 & 3 are interconnecting, offering a large bedroom/ living space alternative)
- ~ Master bedroom has large walk in robe + ensuite & air-conditioning


Price : \$ 436,500




View : <https://www.kingcompanypg.com/sale/qld/logan/waterford/residential/house/6760694>

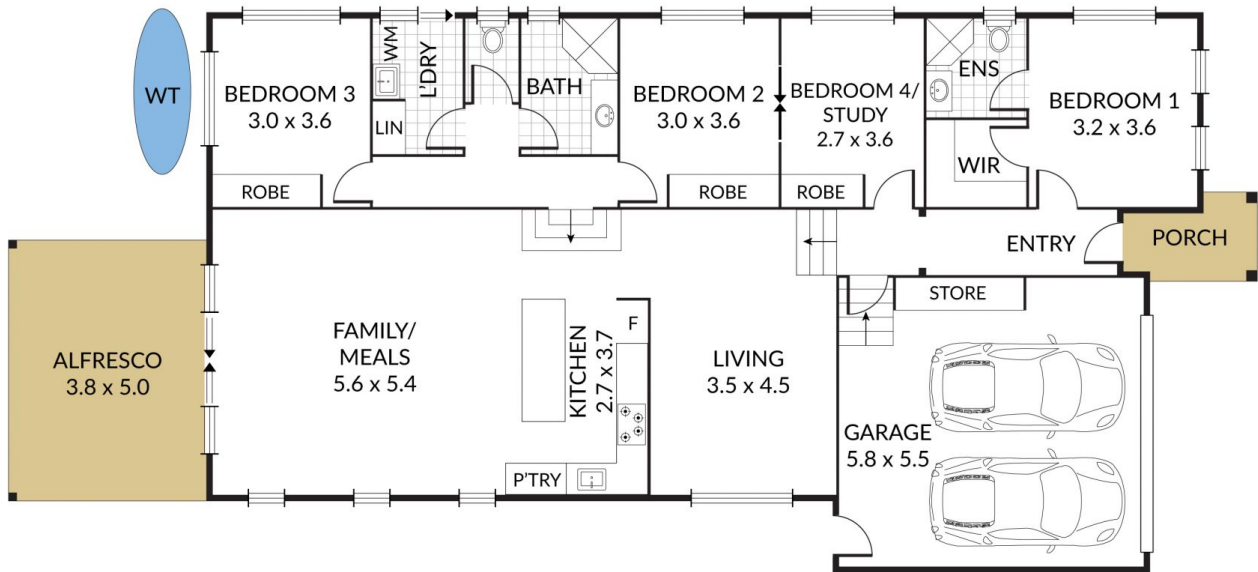


Courtney King
07 3805 2755

Internal 189m² External 23m² Total 212m²

6 Eurimbula Close, **Waterford** 
NORTH

4 x  2 x  2 x 



KING & COMPANY
PROPERTY GROUP

NOTE: Every precaution has been taken to verify the accuracy of the above details. However, prospective purchasers are advised to make their own enquiries.