



16 Grand Terrace Waterford QLD

4 🛏 2 🚿 2 🚗

Situated across from the main Woodlands parklands, this home is deceptively big!
The ideal property for those looking for something more like a townhome, low maintenance but spacious living and in an idyllic location!

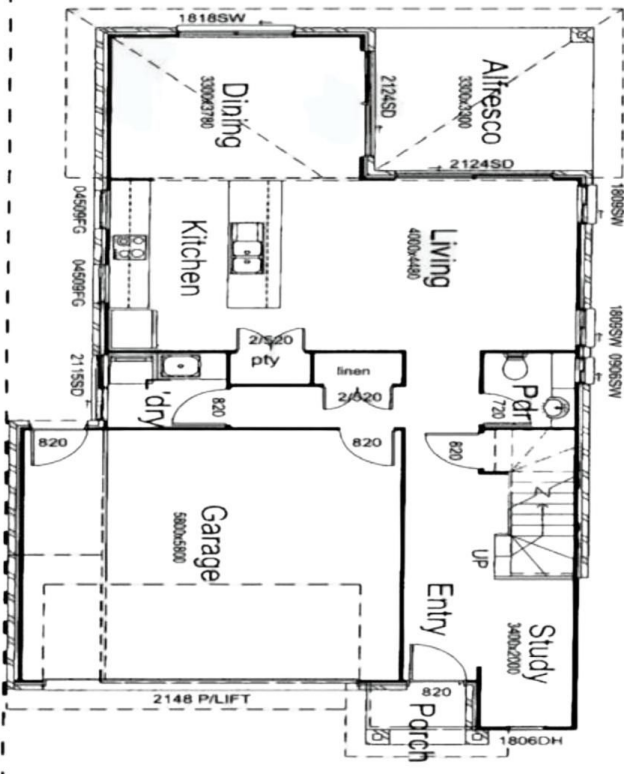
Price : \$ 525,500
Land Size : 240 sqm
View : <https://www.kingcompanypg.com/sale/qld/lo-gan/waterford/residential/house/6760698>

Property Hallmarks:

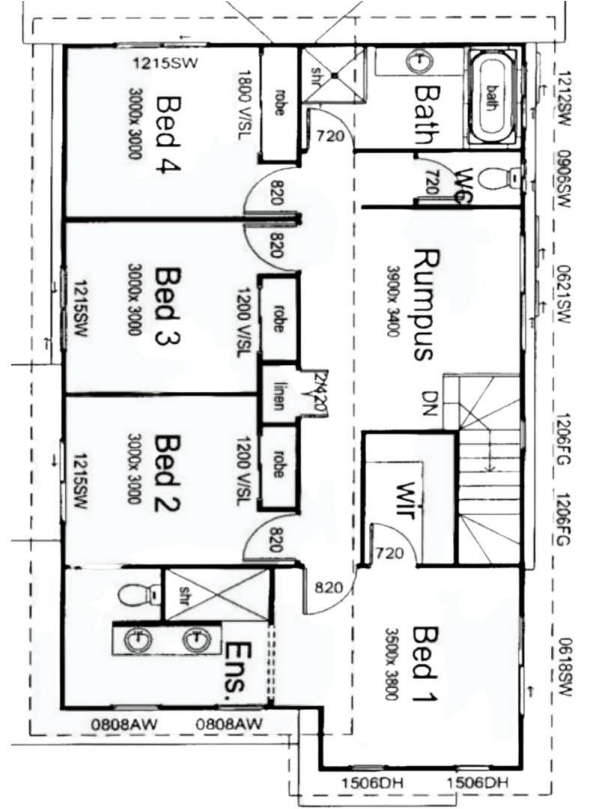
- ~ Open plan living space with air-conditioning & ceiling fans
- ~ Kitchen with island bench, electric cooking and dishwasher
- ~ Living & dining rooms both open out to alfresco
- ~ Separate laundry with extra storage
- ~ Downstairs powder room
- ~ Upstairs there is four well sized bedrooms all with built-ins, air-conditioning & ceiling fans
- ~ Master bedroom with walk in robe & ensuite with double vanity and walk in shower



Courtney King
07 3805 2755



Ground Floor



Level 1