



2 Phillips Lane Drewvale QLD

4 2 2

Situated on a corner block with bushland as your backyard, this lowset home is spacious and will tick boxes for the whole family!

Inside:

- ~ Open plan kitchen, living & dining spaces with air-conditioning & ceiling fans
- ~ Oversized kitchen with breakfast bar, dishwasher & walk-in pantry
- ~ Second living area/media room with ceiling fan
- ~ Four double sized bedrooms, all with built-in robes & ceiling fans
- ~ Oversized Master, with huge walk-in robe + ensuite
- ~ Main bathroom with bathtub & separate toilet

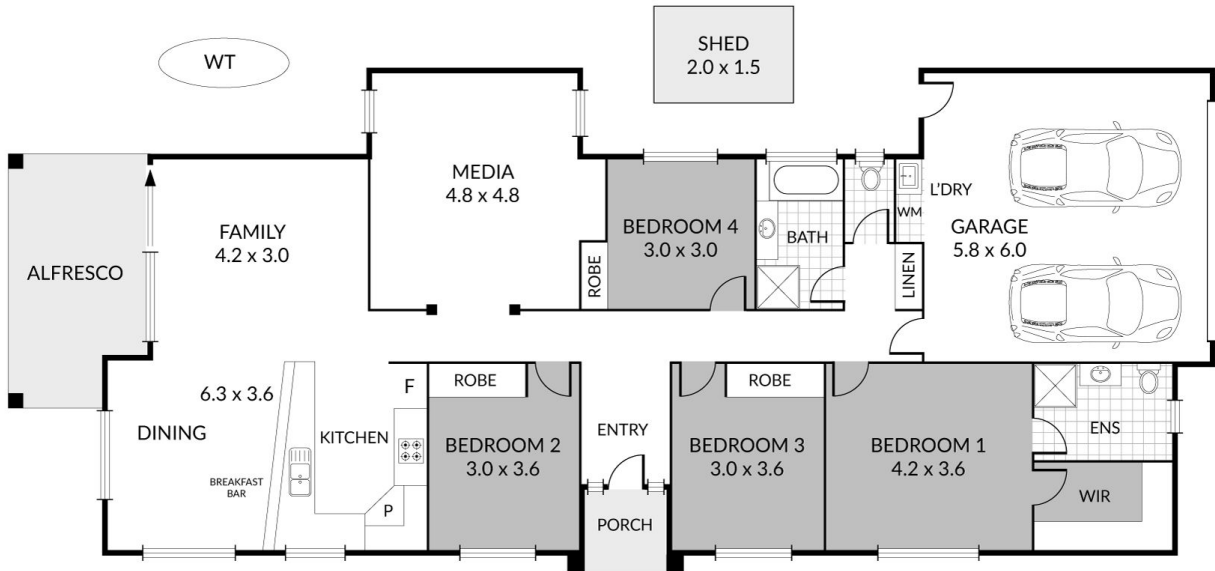
Outside:

- ~ Double lock up garage with internal access




Price : \$ 583,000
Land Size : 514 sqm
View : <https://www.kingcompanypg.com/sale/qld/lo-gan/drewvale/residential/house/6760738>



Courtney King
07 3805 2755



2 Phillips Lane, Drewvale

Internal: 175m² 4 x 
 External: 19m² 2 x 
 Total: 194m² 2 x 

KING & COMPANY
Property Group

Note: Every precaution has been taken to verify the accuracy of the above details. However, prospective purchasers are advised to make their own enquiries.