



## 22 Eagle Avenue Waterford West QLD

4 2 2

Situated in a quite pocket and ready for the next family to make it their own, this home is perfect for those who love indoor/outdoor entertaining!

### Property Hallmarks:

- ~ Multiple living spaces with air-conditioning
- ~ Central kitchen with electric cook-top, oven & dishwasher

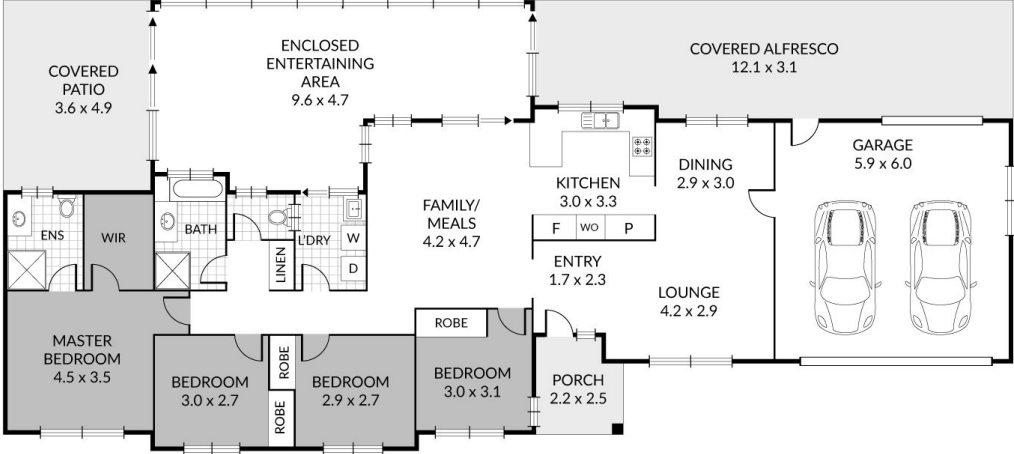
- ~ Dining, lounge & living spaces which wrap kitchen
- ~ Four double bedrooms, all with built-in robes
- ~ Master bedroom with ensuite & WIR + air-conditioning
- ~ Main bathroom with bath tub + separate toilet
- ~ Separate laundry room with rear access
- ~ HUGE, fully enclosed alfresco area, with sliding windows, tiled floors and access to adjoining pergola area
- ~ Low maintenance yard space with garden shed & all fully fenced

**Price** : \$ 605,000  
**Land Size** : 742 sqm  
**View** : <https://www.kingcompanypg.com/sale/qld/lo-gan/waterford-west/residential/house/6760787>



**Courtney King**  
07 3805 2755

SHED  
3.0 x 3.0



22 Eagle Avenue, Waterford West

Internal: 192m<sup>2</sup>    4 x

External: 59m<sup>2</sup>    2 x

Total: 251m<sup>2</sup>    2 x

KING & COMPANY  
Property Group

Note: Every precaution has been taken to verify the accuracy of the above details. However, prospective purchasers are advised to make their own enquiries.