



**18/33-35 Jellicoe Street Loganlea QLD**

2 1 2

Situated in the ever-growing pocket of Loganlea, within walking distance to public transport & all amenities!

Property Hallmarks:

Inside:

[Upstairs]

- ~ Two oversized bedrooms with built-ins & ceiling fans
- ~ Main bathroom with bathtub & separate toilet
- ~ Storage cupboard

[Downstairs]

- ~ Open plan living/ dining area with air-conditioning & ceiling fans
- ~ Well-appointed kitchen with dishwasher
- ~ Laundry with storage cupboard
- ~ Additional separate toilet
- ~ Garage with electric door
- ~ Security screens & doors throughout

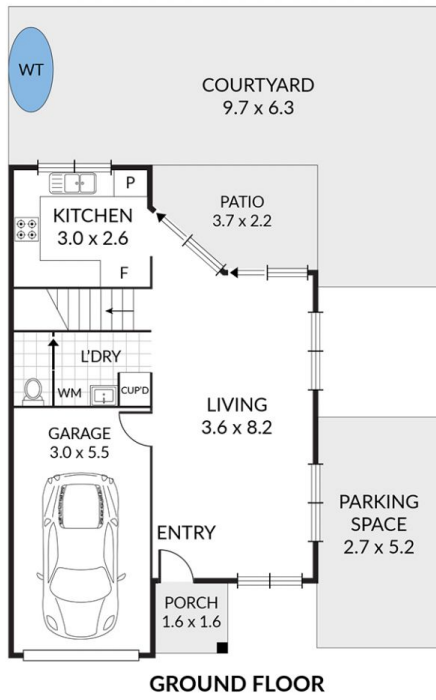
**Price** : \$ 292,000

**Land Size** : 117 sqm




**View** : <https://www.kingcompanypg.com/sale/qld/logan/loganlea/residential/townhouse/6828243>



**Courtney King**  
07 3805 2755



**18/33-35 Jellicoe Street Loganlea**

Internal: 99m<sup>2</sup>    2 x   
 External: 67m<sup>2</sup>    1 x   
 Total: 166m<sup>2</sup>    1 x 

**KINGCOMPANY**  
Property Group

Note: Every precaution has been taken to verify the accuracy of the above details. However, prospective purchasers are advised to make their own enquiries.