



20 Gloucester Street Waterford QLD

4  2  2 

This one is surrounded by quality homes and in an unbeatable position, across from Bushland and walking distance to Canterbury College.

Property Features

- Generous entryway with double wooden doors
- Open plan kitchen, living & dining space with polished timber floors
- Kitchen with breakfast bar, dishwasher, gas cooktop & overlooking the Parklands
- Media room/second lounge with air conditioning
- Master bedroom with ceiling fan, spacious WIR & ensuite, with double vanity + overlooking bushland
- All bedrooms with built-ins and ceiling fans
- Main bathroom with bathtub + separate toilet
- Outdoor entertaining area (deck) overlooking parklands
- Huge laundry/mudroom with lots of storage & rear access

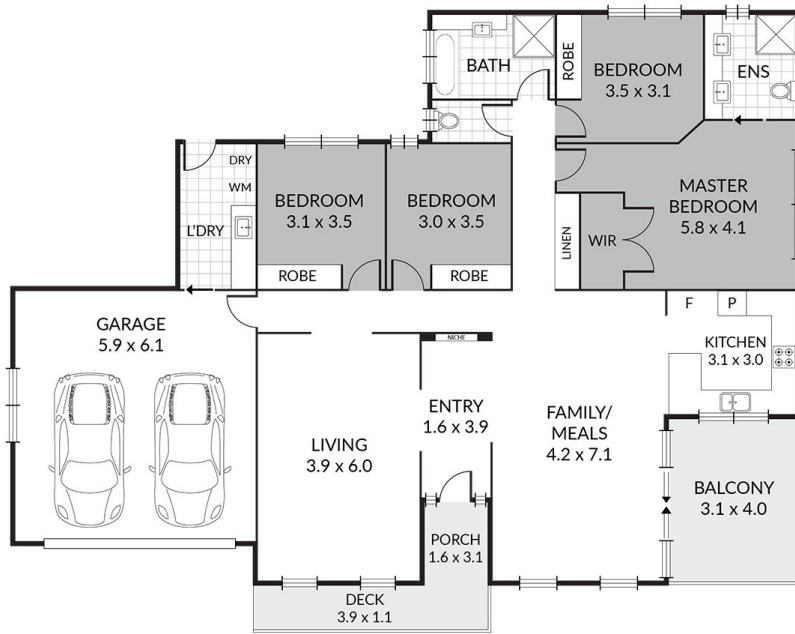
Price : \$ 650,000

Land Size : 643 sqm

View : <https://www.kingcompanypg.com/sale/qld/lo-gan/waterford/residential/house/6897200>



Courtney King
07 3805 2755



20 Gloucester Street Waterford

Internal: 185m²
 External: 22m²
 Total: 207m²

4 x
 2 x
 2 x

KING & COMPANY
 Property Group

Note: Every precaution has been taken to verify the accuracy of the above details. However, prospective purchasers are advised to make their own enquiries.