



24 Parkfront Terrace Waterford QLD

4 2 2

Situated on a large block and overlooking parklands, this home is the ideal first home or investment opportunity!

Property Hallmarks:

- ~ Split level home, across 3 levels
- ~ Extra large living space with plenty of natural light & air-conditioning
- ~ Modern kitchen with breakfast bar + dining space & air-conditioning
- ~ All bedrooms with ceiling fans & built-ins (1 without built-in)
- ~ Main bathroom with bathtub & separate toilet
- ~ Master is on a separate level, with ensuite, WIR & air-conditioning
- ~ Separate laundry room + plenty of storage space & external access (to middle level)
- ~ Gorgeous high ceilings throughout

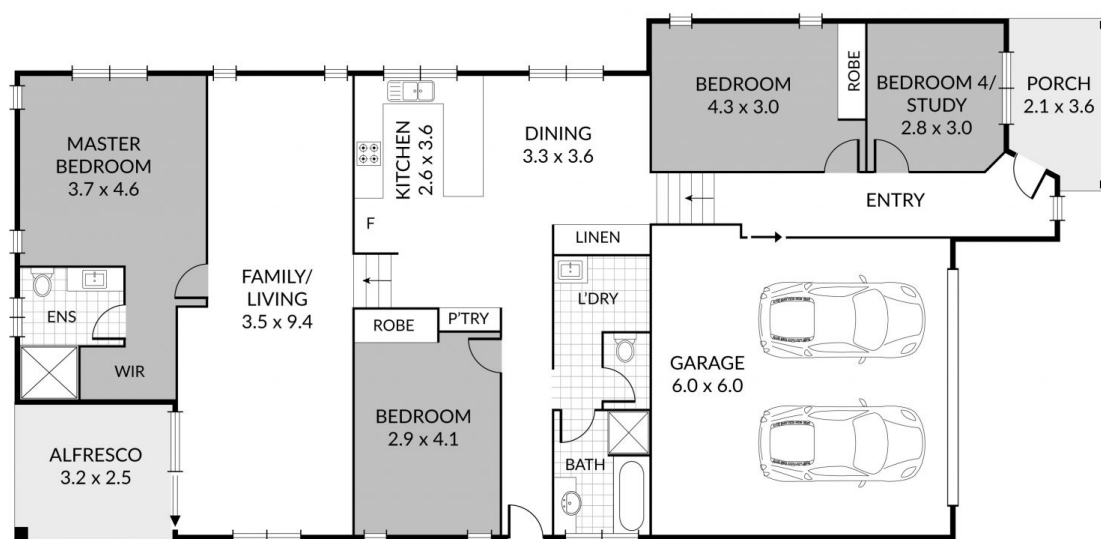
Price : \$ 555,000
Land Size : 600 sqm
View : <https://www.kingcompanypg.com/sale/qld/lo-gan/waterford/residential/house/6914744>



Courtney King
07 3805 2755



Taylor McDonald-Smith
07 3805 2755



24 Parkfront Terrace, Waterford

Internal: 180m²
 External: 15m²
 Total: 195m²

4 x
 2 x
 2 x

KING&COMPANY

Note: Every precaution has been taken to verify the accuracy of the above details. However, prospective purchasers are advised to make their own enquiries.