



29 Conimbla Crescent Waterford QLD

4 🚗 2 🚗 2 🚗

An immaculate Hamptons-style home, that will make you feel at home from the minute you walk in the front gate.

Price : \$ 577,000

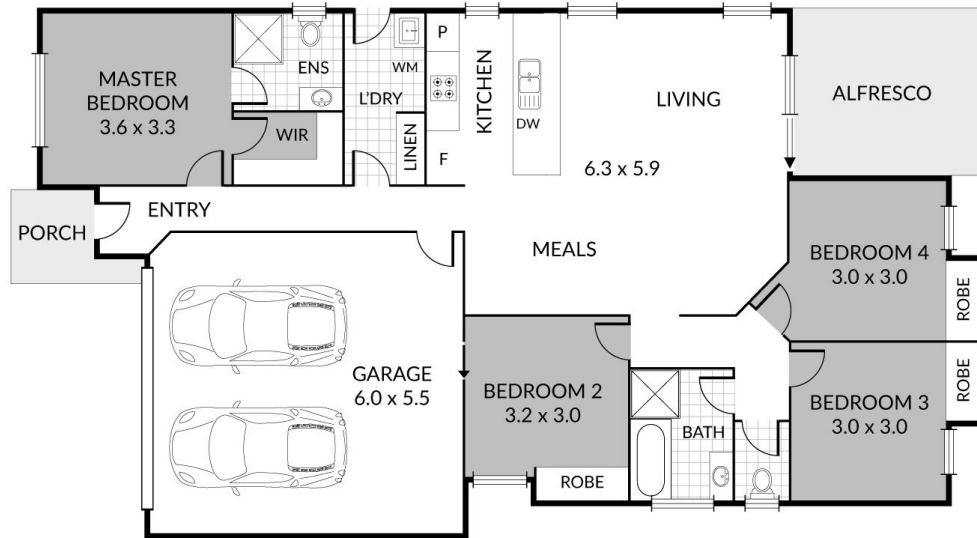
View : <https://www.kingcompanypg.com/sale/qld/logan/waterford/residential/house/7080656>

Property Features:




- ~ Open plan living, kitchen & dining area with air-conditioning
- ~ Kitchen with island bench, dishwasher & electric cooktop + pendant lighting
- ~ Master bedroom with ensuite, WIR & air-conditioning
- ~ All bedrooms with built-in robes & ceiling fans
- ~ Main bathroom with bathtub & separate toilet
- ~ Laundry with storage, bench space & external access
- ~ Double lock up garage
- ~ Lovely alfresco area with privacy shutters
- ~ Low maintenance yard space, fully landscaped with firepit & entertaining area overlooking bushlands



Courtney King
07 3805 2755



29 Conimbla Crescent, Waterford

Internal: 156m² 4 x 
 External: 15m² 2 x 
 Total: 171m² 2 x 

KING & COMPANY

Note: Every precaution has been taken to verify the accuracy of the above details. However, prospective purchasers are advised to make their own enquiries.