






32 Grand Terrace Waterford QLD

4  2  2 

Oversized family home, with a low-maintenance lifestyle, only a short stroll to Woodlands Parklands.

THE IMPORTANT POINTS:

- ~ Multiple living spaces with air-conditioning
- ~ Two alfresco areas
- ~ Low maintenance yard & dual access

INSIDE:

- ~ Open plan living & dining space with air-conditioning & stacker doors
- ~ Oversized kitchen with island bench, gas cooking & dishwasher
- ~ Second living space/ media room
- ~ All bedrooms are carpeted, with built-in wardrobes & ceiling fans
- ~ Master room has oversized mirrored robes & ensuite

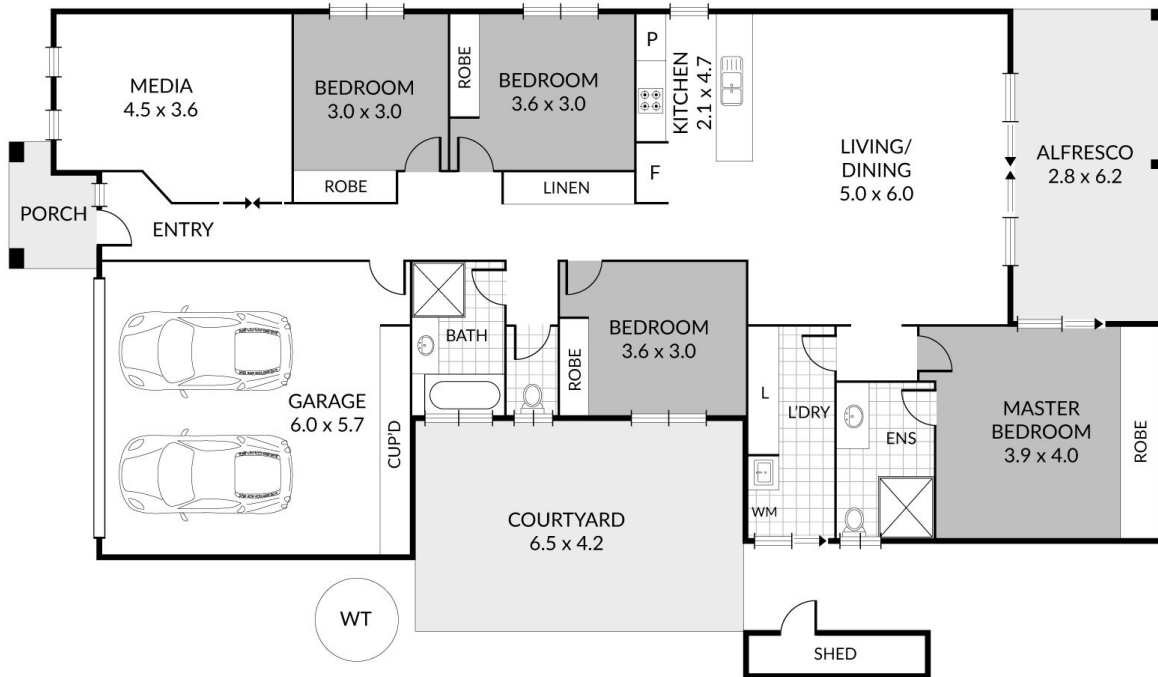
Price : \$ 590,000

Land Size : 456 sqm

View : <https://www.kingcompanypg.com/sale/qld/lo-gan/waterford/residential/house/7145553>



Courtney King
07 3805 2755



32 Grand Terrace, Waterford

Internal: 191m²
 External: 50m²
 Total: 241m²

4 x
 2 x
 2 x

KING & COMPANY

Note: Every precaution has been taken to verify the accuracy of the above details. However, prospective purchasers are advised to make their own enquiries.