

## 28 Sanctuary Parkway Waterford QLD

4 🛏 2 🚿 2 🚗

Situated in the very popular Sanctuary Parkway, with front porch views out over the parklands, this home is sure to go quick!

### THE IMPORTANT POINTS:

- ~ Situated across from Parklands
- ~ Two living spaces with air-conditioning
- ~ Flat usable yard space & lovely alfresco area

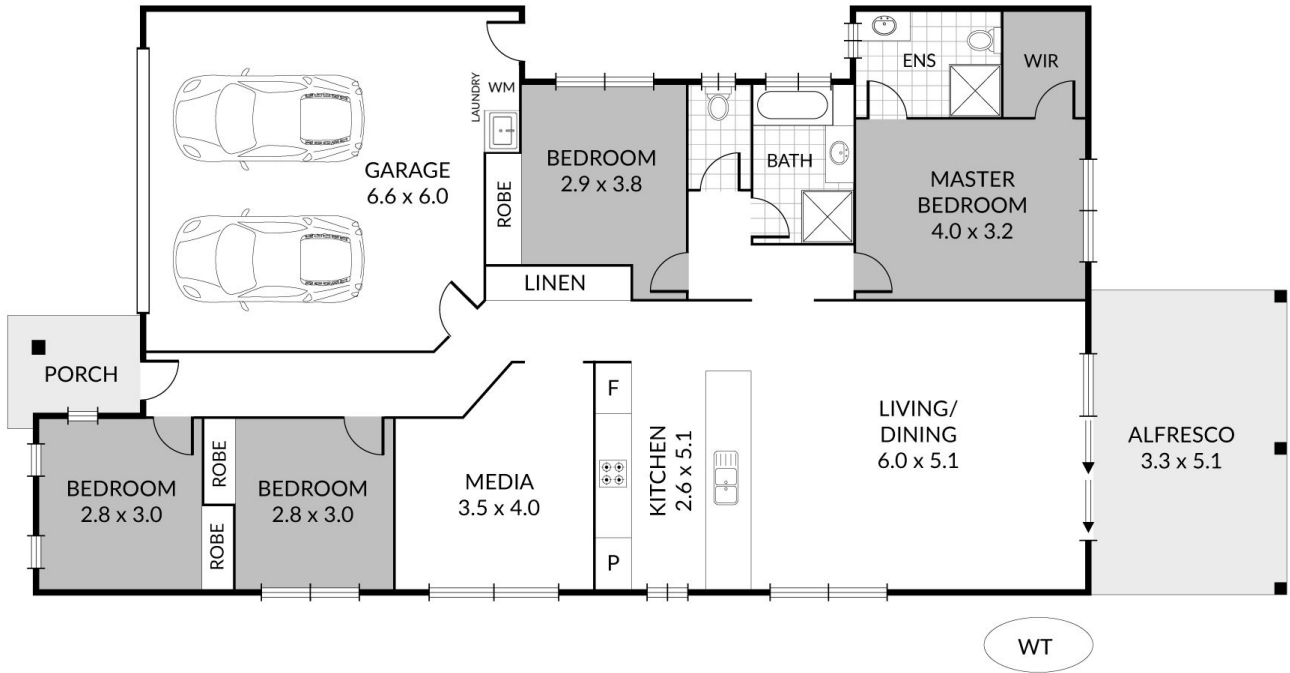
### INSIDE:

- ~ Open plan living & dining space with air-conditioning
- ~ Oversized kitchen with island bench, gas cooking & dishwasher
- ~ Second living space/ media room
- ~ All bedrooms are carpeted, with built-in wardrobe & ceiling fans
- ~ Master room has a walk-in-robe & ensuite




**Price** : \$ 580,000  
**Land Size** : 467 sqm  
**View** : <https://www.kingcompanypg.com/sale/qld/lo-gan/waterford/residential/house/7145831>



**Courtney King**  
07 3805 2755



**28 Sanctuary Parkway, Waterford**

Internal: 181m<sup>2</sup>    4 x   
 External: 20m<sup>2</sup>    2 x   
 Total: 201m<sup>2</sup>    2 x 

**KING & COMPANY**

Note: Every precaution has been taken to verify the accuracy of the above details. However, prospective purchasers are advised to make their own enquiries.