



6 Salwood Place Beenleigh QLD

5  3  4 

Situated in a cul-de-sac position and backing onto reserve, this property is a must-see for those looking for a large home for the whole family!

INDOOR

{Upstairs}

- ~ Tidy kitchen with electric cooking, dishwasher & breakfast bar
- ~ Open-plan dining & family space with air-conditioning
- ~ Living area with air-conditioning opening onto wrap-around verandah with city views
- ~ All bedrooms with built-in wardrobes
- ~ Family-sized bathroom with bathtub
- ~ Additional bedroom or Study
- ~ Master bedroom with ensuite, walk-in robe & air-conditioning
- ~ Rumpus room with ceiling fan & access to rear deck

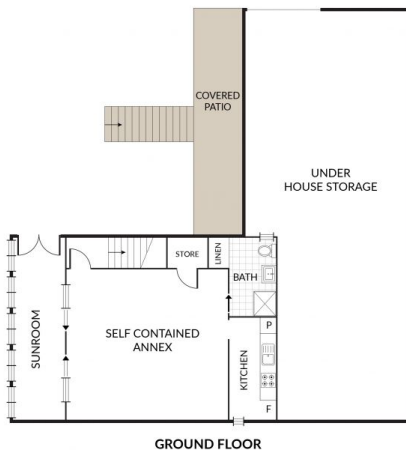
Price : \$ 795,000

Land Size : 1419 sqm

View : <https://www.kingcompanypg.com/sale/qld/lo-gan/beenleigh/residential/house/7346351>



Courtney King
07 3805 2755



KING & COMPANY

6 SALWOOD PLACE BEENLEIGH

- 5 x 🏠
- 3 x 🚗
- 2 x 🚚

NOTE: Every precaution has been taken to verify the accuracy of the above details. However, prospective purchasers are advised to make their own enquiries.