



1/704 Kingston Road Loganlea QLD

6 4 3

Vacant 450sqm allotment with street frontage, ready for you to build your next high-yielding investment or dream family home.

IMPORTANT POINTS

- ~ Choose from two build options (four bedroom family home or dual occupancy build)
- ~ High-yielding investment opportunity with plenty of depreciation benefits
- ~ Fantastic location
- ~ Build commencement date March 2023
- ~ Current rental appraisal available upon request

BUILD CHOICES

Option 1: DUAL OCCUPANCY

Price Guide: High \$700k to Early \$800k Buyers

Unit A

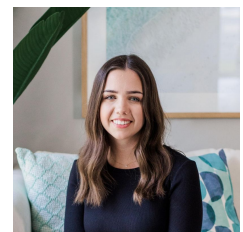
Price : CONTACT AGENT

Land Size : 450 sqm

View : <https://www.kingcompanypg.com/sale/qld/logan/loganlea/residential/land/7350334>



Courtney King
07 3805 2755



Taylor McDonald-Smith
07 3805 2755