



## 32 Carnarvon Crescent Waterford QLD

4 2 2

Split over three levels and with soaring high ceilings, this home has plenty to offer! If you are looking for a low-maintenance purchase with plenty of room for the family, this one is a must Inspect!

**Price** : \$ 680,000  
**Land Size** : 400 sqm  
**View** : <https://www.kingcompanypg.com/sale/qld/lo-gan/waterford/residential/house/7583876>

### IMPORTANT Points:

- ~ New paint throughout
- ~ New carpets in bedrooms and two living spaces
- ~ Gas cooking & hot water
- ~ Quiet cul-de-sac position

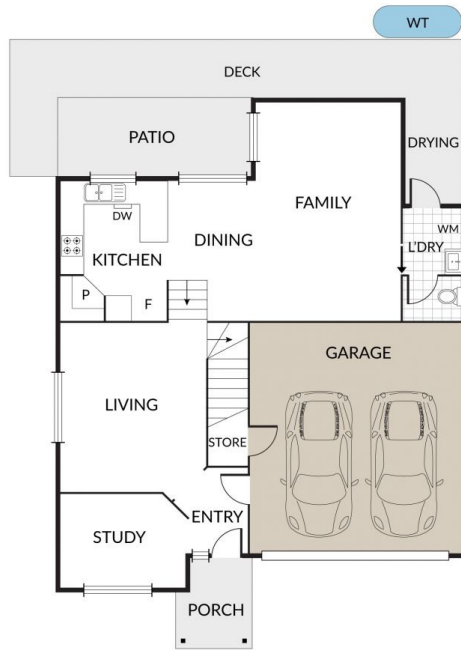
### INSIDE:

[Lower level]

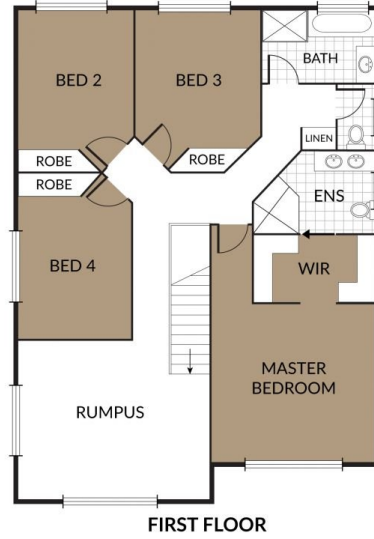
- ~ Kitchen with breakfast bar, dishwasher and walk-in pantry
- ~ Open plan, tiled living & dining space
- ~ Sliding doors out to alfresco area overlooking low



**Courtney King**  
07 3805 2755



GROUND FLOOR



FIRST FLOOR

**KING & COMPANY**

32 CARNARVON CRESCENT, WATERFORD

- 4 x 🏠
- 2 x 🚗
- 2 x 📦

NOTE: Every precaution has been taken to verify the accuracy of the above details. However, prospective purchasers are advised to make their own enquiries.