



43 Carnarvon Crescent Waterford QLD

3 2 1

If you are looking for a home oozing character that also provides you with lifestyle additions ideal for the entertainer, then welcome to your new home in Carnarvon Crescent!

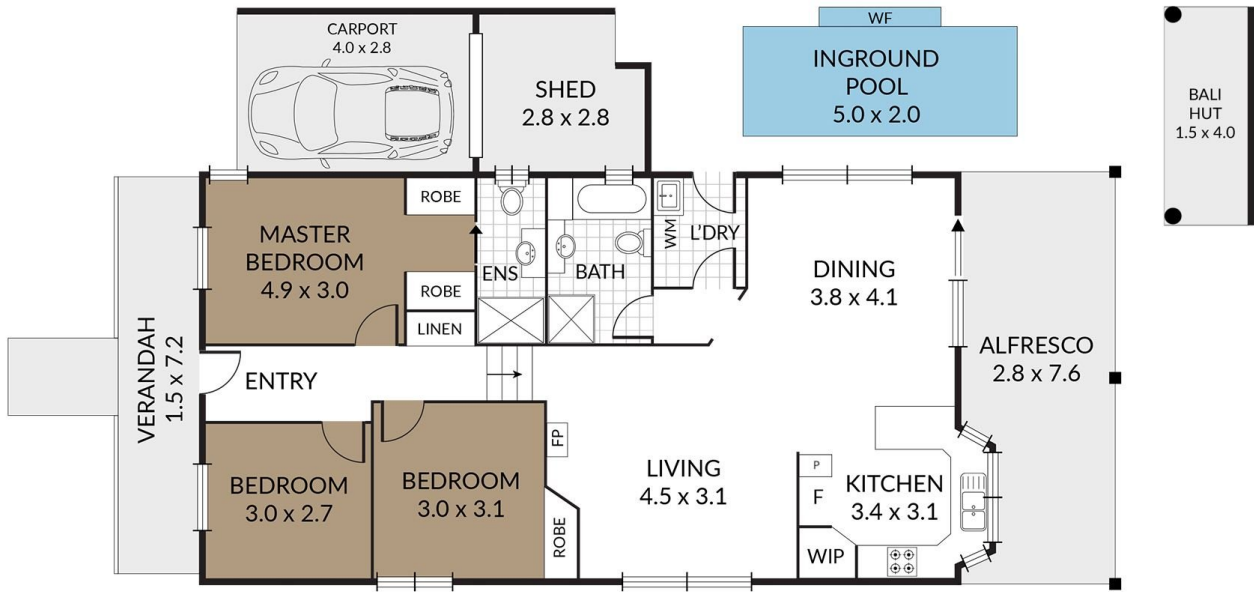
Price : \$ 600,000
Land Size : 300 sqm
View : <https://www.kingcompanypg.com/sale/qld/lo-gan/waterford/residential/house/7602835>

INSIDE:

- ~ Open plan dining & spacious family kitchen with dishwasher & breakfast bar opening to the back deck
- ~ Separate living space with both pot-belly fireplace & air-conditioning
- ~ Master bedroom with double built-ins, ensuite & air-conditioning
- ~ Other bedrooms with ceiling fans & (one with built-in)
- ~ Main bathroom with bath tub
- ~ Separate Laundry with ample storage
- ~ Carport has been converted into a large storage area with roller door access



Courtney King
07 3805 2755



KING & COMPANY

43 CARNARVON CRESCENT WATERFORD

Internal: 103m² 3 x 🏠
 External: 71m² 2 x 🌿
 Total: 174m² 1 x 🚗

NOTE: Every precaution has been taken to verify the accuracy of the above details. However, prospective purchasers are advised to make their own enquiries.