



16 Bladensburg Drive Waterford QLD

4 2 2

Well-proportioned home with an open and airy feel!
Excellent tenants in place!

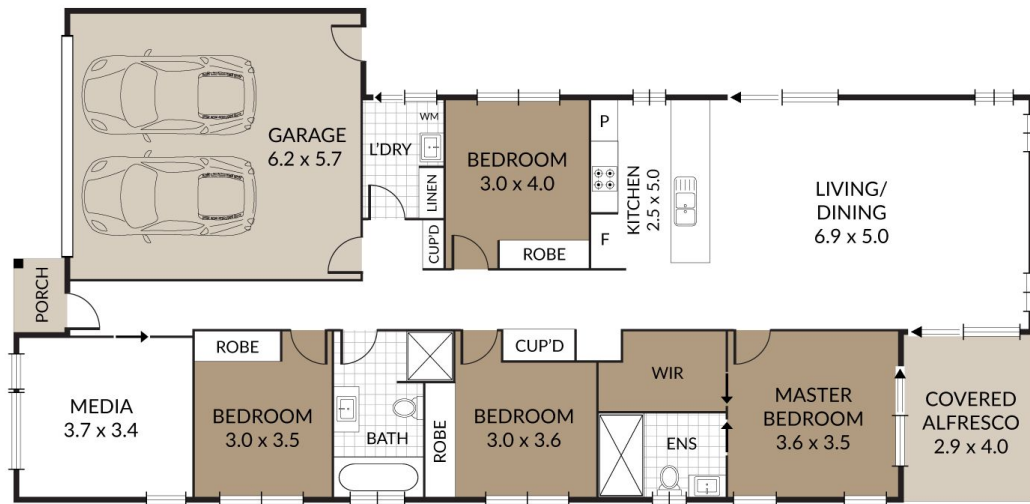
INSIDE:

- ~ Open plan tiled living & dining space (air-conditioned), opening with stacker doors to alfresco area
- ~ Separate living space/ media room (or 5th bedroom)
- ~ Well appointed kitchen with gas cooking, dishwasher & breakfast bar
- ~ Dining space has an additional door out to alfresco area
- ~ Master bedroom with walk-in robe, ensuite & air-conditioning
- ~ Other bedrooms with ceiling fans & double built-in robes
- ~ Main bathroom with bathtub
- ~ Separate Laundry with ample storage & rear access
- ~ Double lock up garage

Price : \$ 637,500
Land Size : 448 sqm
View : <https://www.kingcompanypg.com/sale/qld/lo-gan/waterford/residential/house/7746714>



Courtney King
07 3805 2755



KING & COMPANY

NOTE: Every precaution has been taken to verify the accuracy of the above details. However, prospective purchasers are advised to make their own enquiries.

16 BLADENSBURG DRIVE WATERFORD

Internal: 198m² 4 x 🏠
 External: 14m² 2 x 🏠
 Total: 212m² 2 x 🏠