



18 Jasmina Parade Waterford QLD

4  2  2 

Fresh and ready for your family to move straight in...

HALLMARKS:

- ~ Two living spaces
- ~ Air-conditioning to living & master
- ~ Walking trails right across from your front door

INSIDE:

- ~ Open plan living & dining space with air-conditioning
- ~ Freshly renovated kitchen with brand new appliances & breakfast bar
- ~ Separate living space/ media room
- ~ Air-conditioned master bedroom with walk-in robe & ensuite
- ~ All other bedrooms with ceiling fans [2 with built-ins]
- ~ Main bathroom with bathtub + separate toilet
- ~ Double lock up garage with laundry & extra storage

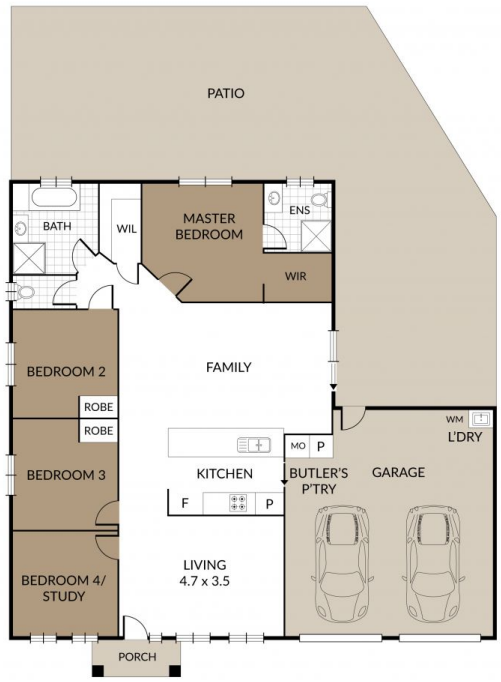
Price : \$ 700,000

Land Size : 645 sqm

View : <https://www.kingcompanypg.com/sale/qld/lo-gan/waterford/residential/house/7810121>



Courtney King
07 3805 2755



KING & COMPANY

NOTE: Every precaution has been taken to verify the accuracy of the above details. However, prospective purchasers are advised to make their own enquiries.

18 JASMINA PARADE WATERFORD

4 x 🏠	4 x 🏠
2 x 🚗	2 x 🚗
2 x 🚗	2 x 🚗