



## 35 Mossman Parade Waterford QLD

4  2  2 

SO Much Potential - Act Now on this Renovator!!

### HALLMARKS:

- | Open-plan living space
- | Air-conditioning to living & master
- | Large 743sqm corner block

### INSIDE:

- | Open plan tiled living & dining space with doors to alfresco
- | Separate carpeted lounge room
- | Well-appointed kitchen with dishwasher
- | Spacious master bedroom with walk-in robe & ensuite (air-conditioned)
- | All other bedrooms with built-in robes & ceiling fans
- | Main bathroom with bathtub + separate toilet
- | Separate laundry room

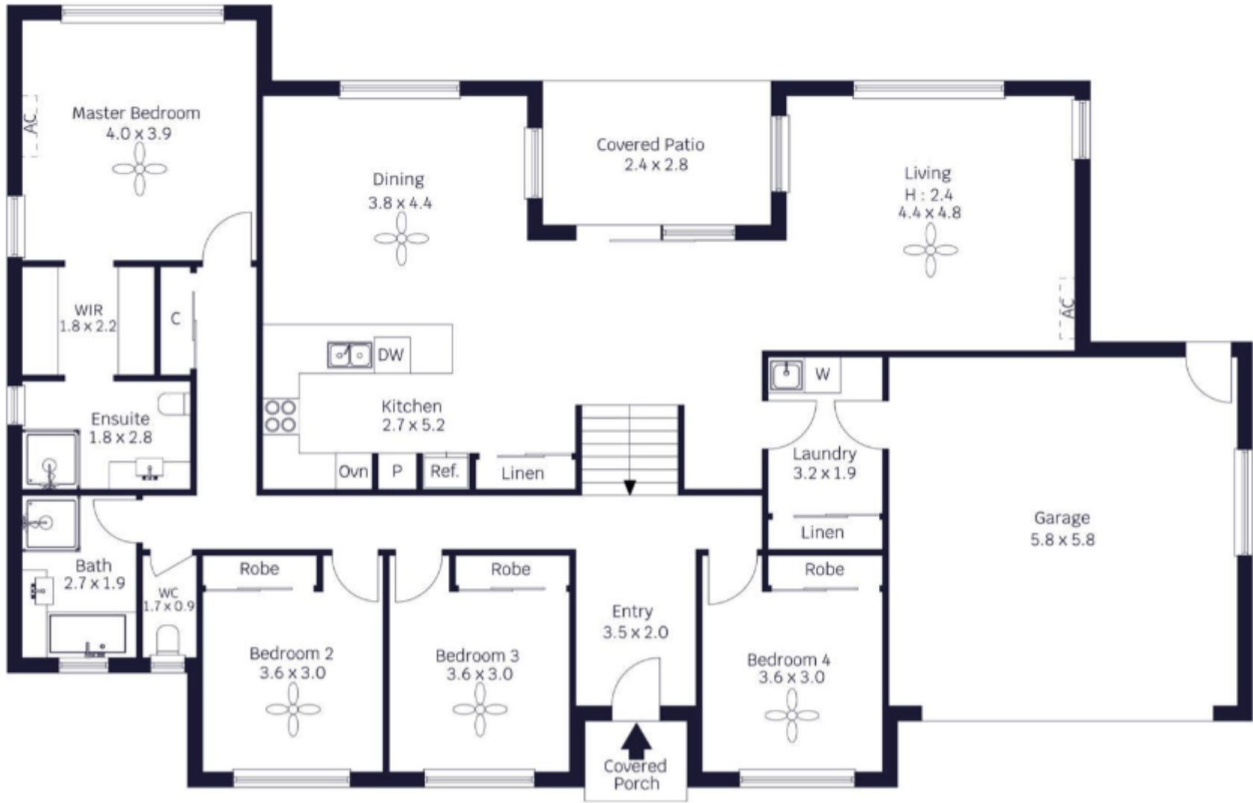
**Price** : \$ 680,000

**Land Size** : 743 sqm

**View** : <https://www.kingcompanypg.com/sale/qld/lo-gan/waterford/residential/house/7845656>



**Courtney King**  
07 3805 2755



KING & COMPANY