



16 Castile Crescent Holmview QLD

4 2 6

The ultimate family acreage home, just a stone's throw from all amenities!

HALLMARKS:

- | 5657sqm block (Just over an acre!)
- | 9.x6m shed + workshop & storage + carport
- | Town water + 2 large water tanks + Septic Sewage
- | Family home with ample living space + pot-belly stove
- | Fantastic location, close to schools, shops & much more!

INSIDE:

- | Large entertainers kitchen with breakfast bar & dishwasher
- | Adjoining living/dining space with access to an alfresco area with gorgeous natural light
- | Multiple living spaces with theatre room with air-conditioning

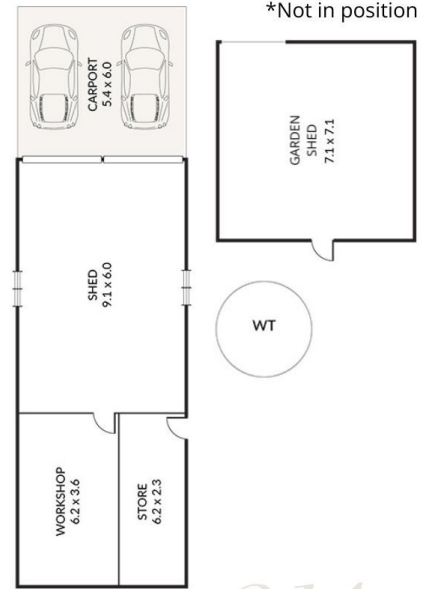
Price : \$ 1,175,000
Land Size : 5657 sqm
View : <https://www.kingcompanypg.com/sale/qld/lo-gan/holmview/residential/acreagesemirural/7943927>



Courtney King
07 3805 2755



Chloe Grieve
07 3805 2755



Total sqm 214

4 bedroom 2 bathroom car accom

16 Castile Crescent
HOLMVIEW

KING&COMPANY