



## 28 Beutel Street Waterford West QLD

3 2 1

This one needs to be seen to be believed, there is SO much potential here and the home is unsuspectingly large on the inside. A MUST Inspect!!

### HALLMARKS:

- | Tidy lowset brick home with HUGE potential
- | Security screens & doors throughout
- | 600sqm block

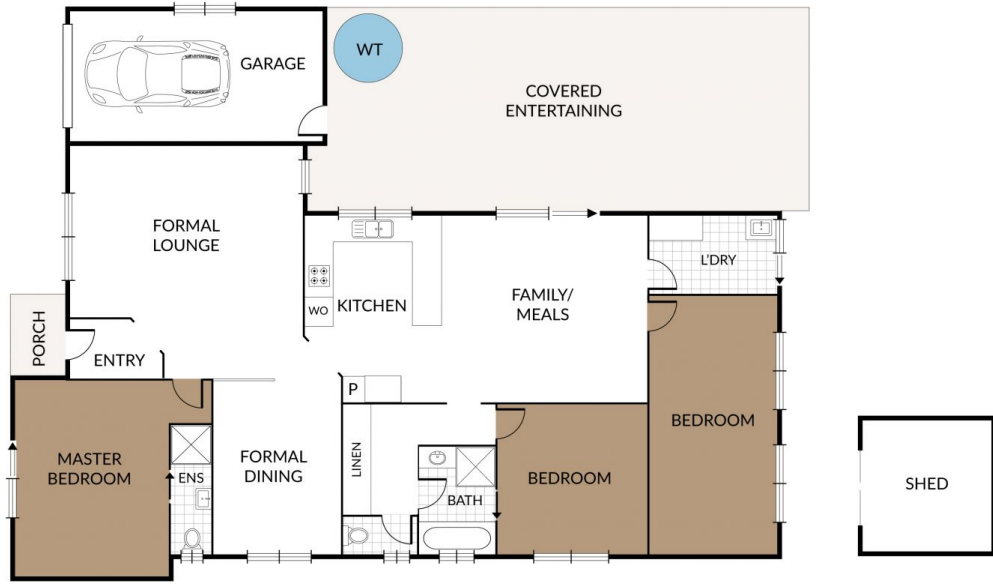
### INSIDE:

- | Original U-shaped kitchen with ample storage, electric cooking & breakfast bar
- | Large living/ dining space with doors to alfresco
- | Separate formal dining room
- | Family room/ rumpus to the front of the home
- | Master bedroom with ensuite and external window shutters

**Price** : \$ 618,000  
**Land Size** : 600 sqm  
**View** : <https://www.kingcompanypg.com/sale/qld/lo-gan/waterford-west/residential/house/7979223>



**Courtney King**  
07 3805 2755



3 bedroom 2 bathroom 1 car accom

28 Beutel Street  
WATERFORD WEST

KING&COMPANY

NOTE: Every precaution has been taken to verify the accuracy of the above details. However, prospective purchasers are advised to make their own enquiries.